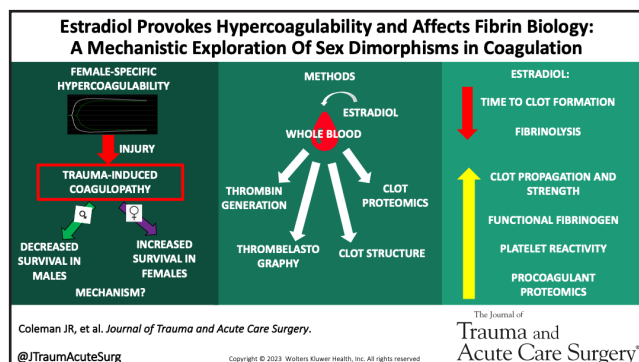


JTACS FEBRUARY TABLE OF CONTENTS

'BEST OF' FEBRUARY ARTICLES

BEST OF BASIC SCIENCES ARTICLE



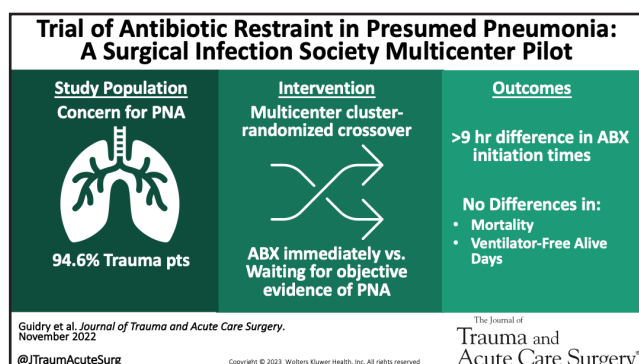
ESTRADIOL PROVOKES HYPERCOAGULABILITY AND AFFECTS FIBRIN BIOLOGY: A MECHANISTIC EXPLORATION OF SEX DIMORPHISMS IN COAGULATION
[HTTPS://JOURNALS.LWW.COM/JTRAUMA/FULLTEXT/2023/02000/ESTRADIOL_PROVOKES_HYPERCOAGULABILITY_AND_AFFECTS.1.ASPX](https://journals.lww.com/jtrauma/fulltext/2023/02000/ESTRADIOL_PROVOKES_HYPERCOAGULABILITY_AND_AFFECTS.1.aspx)



SCAN HERE TO VIEW A VIDEO
OVERVIEW OF THE ARTICLE

<https://qr.page/g/4FuLemWQbOA>

BEST OF SCC ARTICLE

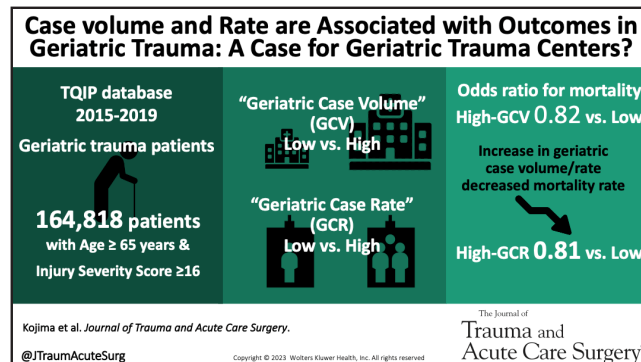


TRIAL OF ANTIBIOTIC RESTRAINT IN PRESUMED PNEUMONIA: A SURGICAL INFECTION SOCIETY MULTICENTER PILOT
[HTTPS://JOURNALS.LWW.COM/JTRAUMA/FULLTEXT/2023/02000/TRIAL_OF_ANTIBIOTIC_RESTRAINT_IN_PRESUMED.8.ASPX](https://journals.lww.com/jtrauma/fulltext/2023/02000/TRIAL_OF_ANTIBIOTIC_RESTRAINT_IN_PRESUMED.8.aspx)

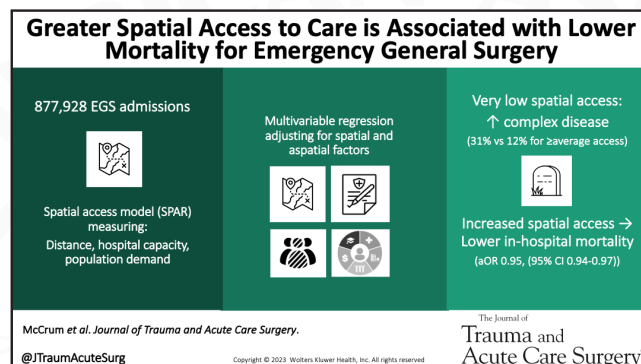


SCAN HERE TO VIEW A VIDEO
OVERVIEW OF THE ARTICLE

<https://qr.page/g/5dzZOAXQsv9>



CASE VOLUME AND RATE ARE ASSOCIATED WITH OUTCOMES IN GERIATRIC TRAUMA: A CASE FOR GERIATRIC TRAUMA CENTERS?
[HTTPS://JOURNALS.LWW.COM/JTRAUMA/FULLTEXT/2023/02000/CASE_VOLUME_AND_RATE_ARE_ASSOCIATED_WITH_OUTCOMES.9.ASPX](https://journals.lww.com/jtrauma/fulltext/2023/02000/CASE_VOLUME_AND_RATE_ARE_ASSOCIATED_WITH_OUTCOMES.9.aspx)



GREATER SPATIAL ACCESS TO CARE IS ASSOCIATED WITH LOWER MORTALITY FOR EMERGENCY GENERAL SURGERY
[HTTPS://JOURNALS.LWW.COM/JTRAUMA/FULLTEXT/2023/02000/GREATER_SPATIAL_ACCESS_TO_CARE_IS_ASSOCIATED_WITH.12.ASPX](https://journals.lww.com/jtrauma/fulltext/2023/02000/GREATER_SPATIAL_ACCESS_TO_CARE_IS_ASSOCIATED_WITH.12.aspx)



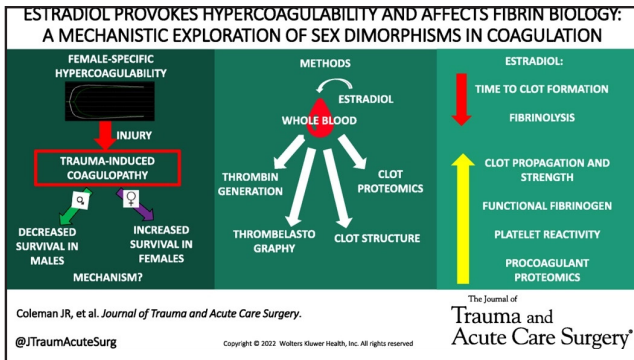
SCAN HERE TO VIEW A VIDEO
OVERVIEW OF THE ARTICLE

<https://qr.page/g/3hLCSalNHRp>

BEST OF TRAUMA ARTICLE

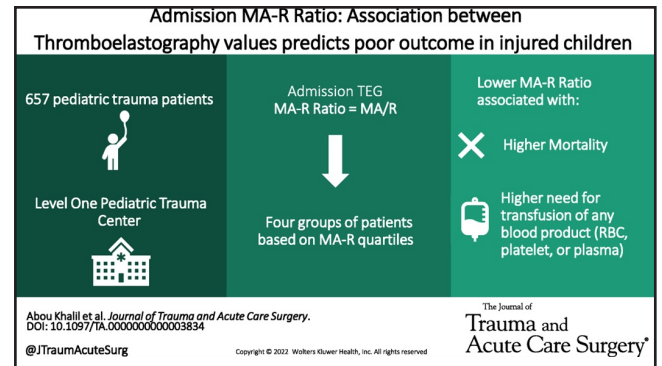
BEST OF EGS ARTICLE

FOLLOW ALONG WITH JTACS ON TWITTER



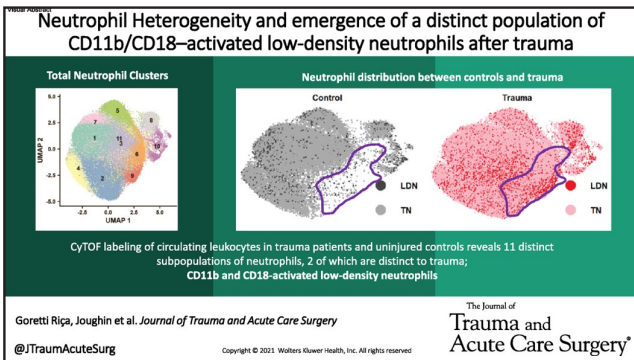
ESTRADIOL PROVOKES HYPERCOAGULABILITY AND AFFECTS FIBRIN BIOLOGY: A MECHANISTIC EXPLORATION OF SEX DIMORPHISMS IN COAGULATION

[HTTPS://JOURNALS.LWW.COM/JTRAUMA/FULLTEXT/2023/02000/ESTRADIOL_PROVOKES_HYPERCOAGULABILITY_AND_AFFECTS.1.ASPX](https://journals.lww.com/jtrauma/fulltext/2023/02000/estradiol_provokes_hypercoagulability_and_affects.1.aspx)



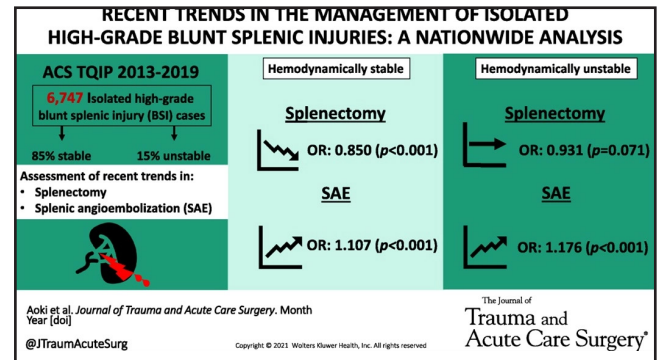
ADMISSION MA-R RATIO: ASSOCIATION BETWEEN THROMBOELASTOGRAPHY VALUES PREDICTS POOR OUTCOME IN INJURED CHILDREN

[HTTPS://JOURNALS.LWW.COM/JTRAUMA/FULLTEXT/2023/02000/ADMISSION_MAXIMUM_AMPLITUDE_REACTION_TIME_RATIO_5.ASPX](https://journals.lww.com/jtrauma/fulltext/2023/02000/admission_maximum_amplitude_reaction_time_ratio_5.aspx)



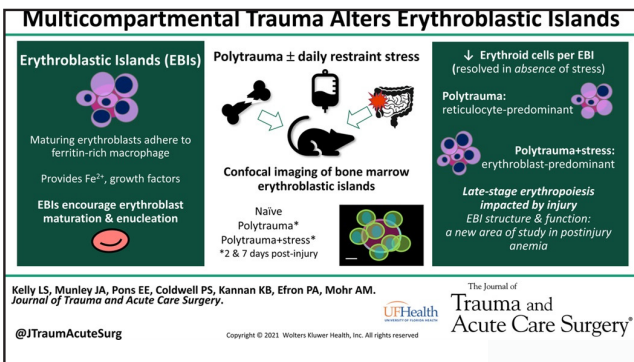
NEUTROPHIL HETEROGENEITY AND EMERGENCE OF A DISTINCT POPULATION OF CD11B/CD18- ACTIVATED LOW-DENSITY NEUTROPHILS AFTER TRAUMA

[HTTPS://JOURNALS.LWW.COM/JTRAUMA/FULLTEXT/2023/02000/NEUTROPHIL_HETEROGENEITY_AND_EMERGENCE_OF_A.2.ASPX](https://journals.lww.com/jtrauma/fulltext/2023/02000/neutrophil_heterogeneity_and_emergence_of_a.2.aspx)



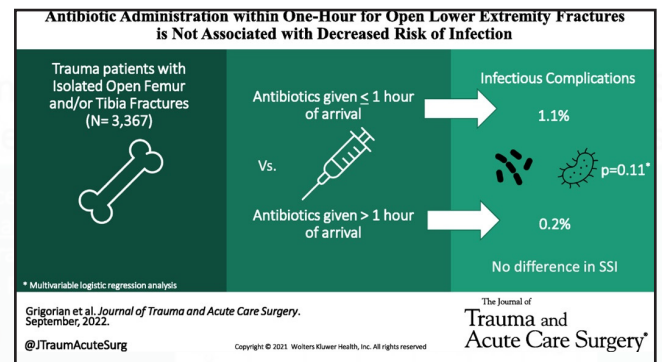
RECENT TRENDS IN THE MANAGEMENT OF ISOLATED HIGH-GRADE SPLENIC INJURIES: A NATIONWIDE ANALYSIS

[HTTPS://JOURNALS.LWW.COM/JTRAUMA/FULLTEXT/2023/02000/RECENT_TRENDS_IN_THE_MANAGEMENT_OF_ISOLATED.6.ASPX](https://journals.lww.com/jtrauma/fulltext/2023/02000/recent_trends_in_the_management_of_isolated.6.aspx)



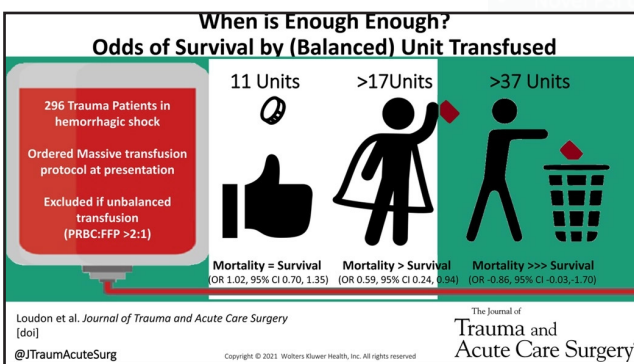
MULTICOMPARTMENTAL TRAUMA ALTERS BONE MARROW ERYTHROBLASTIC ISLANDS

[HTTPS://JOURNALS.LWW.COM/JTRAUMA/FULLTEXT/2023/02000/MULTICOMPARTMENTAL_TRAUMA_ALTERS_BONE_MARROW.3.ASPX](https://journals.lww.com/jtrauma/fulltext/2023/02000/multicompartmental_trauma_alters_bone_marrow.3.aspx)



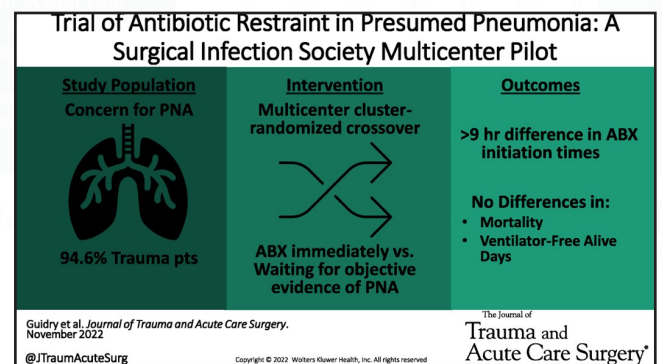
ANTIBIOTIC ADMINISTRATION WITHIN ONE-HOUR FOR OPEN LOWER EXTREMITY FRACTURES IS NOT ASSOCIATED WITH DECREASED RISK OF INFECTION

[HTTPS://JOURNALS.LWW.COM/JTRAUMA/FULLTEXT/2023/02000/ANTIBIOTIC_ADMINISTRATION_WITHIN_1_HOUR_FOR_OPEN.7.ASPX](https://journals.lww.com/jtrauma/fulltext/2023/02000/antibiotic_administration_within_1_hour_for_open.7.aspx)



WHEN IS ENOUGH ENOUGH? ODDS OF SURVIVAL BY UNIT TRANSFUSED

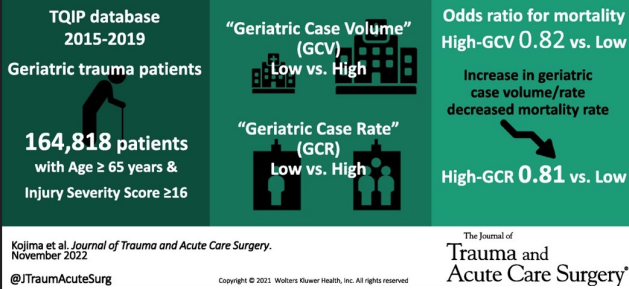
[HTTPS://JOURNALS.LWW.COM/JTRAUMA/FULLTEXT/2023/02000/WHEN_IS_ENOUGH_ENOUGH_ODDS_OF_SURVIVAL_BY_UNIT.4.ASPX](https://journals.lww.com/jtrauma/fulltext/2023/02000/when_is_enough_enough_odds_of_survival_by_unit.4.aspx)



TRIAL OF ANTIBIOTIC RESTRAINT IN PRESUMED PNEUMONIA: A SURGICAL INFECTION SOCIETY MULTICENTER PILOT

[HTTPS://JOURNALS.LWW.COM/JTRAUMA/FULLTEXT/2023/02000/TRIAL_OF_ANTIBIOTIC_RESTRAINT_IN_PRESUMED.8.ASPX](https://journals.lww.com/jtrauma/fulltext/2023/02000/trial_of_antibiotic_restraint_in_presumed.8.aspx)

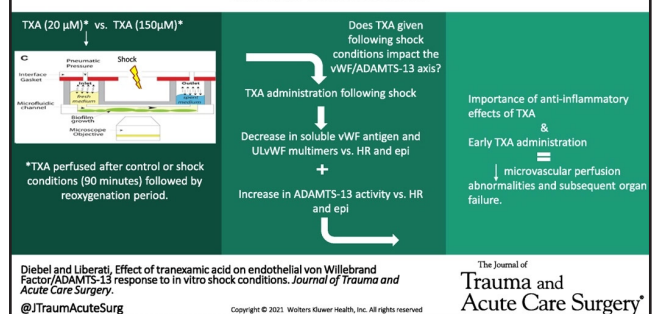
Case volume and rate are associated with outcomes in geriatric trauma: A case for geriatric trauma centers?



CASE VOLUME AND RATE ARE ASSOCIATED WITH OUTCOMES IN GERIATRIC TRAUMA: A CASE FOR GERIATRIC TRAUMA CENTERS?

[HTTPS://JOURNALS.LWW.COM/JTRAUMA/FULLTEXT/2023/02000/CASE_VOLUME_AND_RATE_ARE_ASSOCIATED_WITH_OUTCOMES.9.ASPX](https://journals.lww.com/jtrauma/fulltext/2023/02000/CASE_VOLUME_AND_RATE_ARE_ASSOCIATED_WITH_OUTCOMES.9.ASPX)

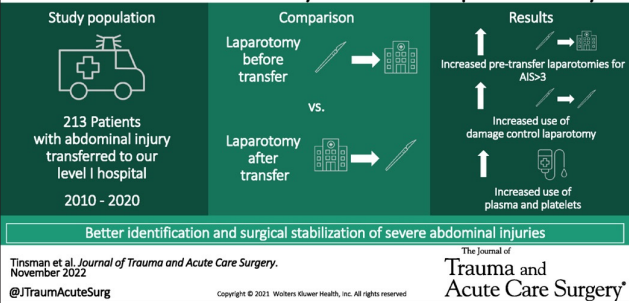
Effect of tranexamic acid on endothelial von Willebrand Factor/ADAMTS-13 response to in vitro shock conditions



EFFECT OF TRANEXAMIC ACID ON ENDOTHELIAL VON WILLEBRAND FACTOR/ADAMTS-13 RESPONSE TO IN VITRO SHOCK CONDITIONS

[HTTPS://JOURNALS.LWW.COM/JTRAUMA/FULLTEXT/2023/02000/EFFECT_OF_TRANEXAMIC_ACID_ON_ENDOTHELIAL_VON13.ASPX](https://journals.lww.com/jtrauma/fulltext/2023/02000/EFFECT_OF_TRANEXAMIC_ACID_ON_ENDOTHELIAL_VON13.ASPX)

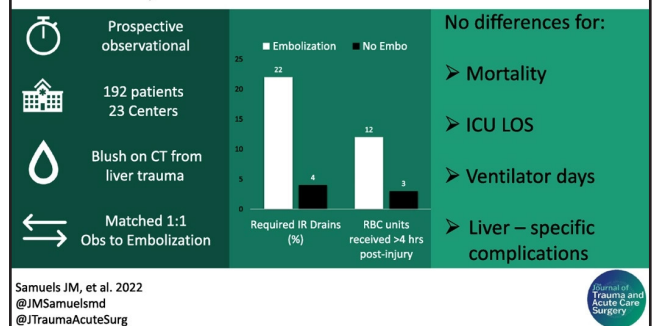
Surgical stabilization of critical abdominal injuries in a mature rural trauma system: A retrospective study



SURGICAL STABILIZATION OF CRITICAL ABDOMINAL INJURIES IN A MATURE RURAL TRAUMA SYSTEM: A RETROSPECTIVE STUDY

[HTTPS://JOURNALS.LWW.COM/JTRAUMA/FULLTEXT/2023/02000/SURGICAL_STABILIZATION_OF_CRITICAL ABDOMINAL10.ASPX](https://journals.lww.com/jtrauma/fulltext/2023/02000/SURGICAL_STABILIZATION_OF_CRITICAL ABDOMINAL10.ASPX)

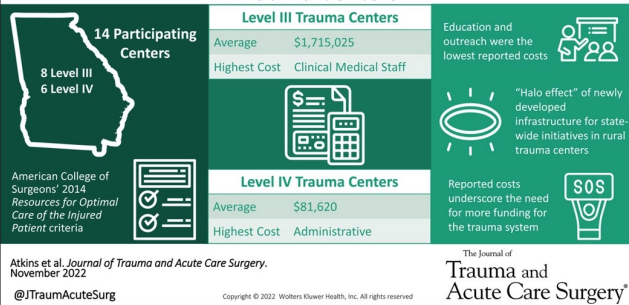
Liver Injuries and CT Extravasation – Embolize or Watch?



AN OBSERVATION-FIRST STRATEGY FOR LIVER INJURIES WITH A BLUSH ON CT IS SAFE AND EFFECTIVE

[HTTPS://JOURNALS.LWW.COM/JTRAUMA/FULLTEXT/2023/02000/AN_OBSERVATION_FIRST_STRATEGY_FOR_LIVER_INJURIES14.ASPX](https://journals.lww.com/jtrauma/fulltext/2023/02000/AN_OBSERVATION_FIRST_STRATEGY_FOR_LIVER_INJURIES14.ASPX)

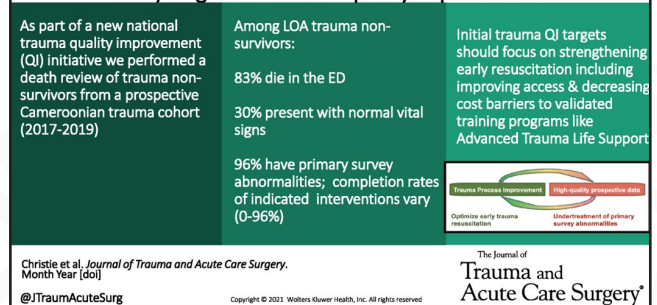
Assessing Trauma Readiness Costs In Level III and IV Trauma Centers



ASSESSING TRAUMA READINESS COSTS IN LEVEL III AND LEVEL IV TRAUMA CENTERS

[HTTPS://JOURNALS.LWW.COM/JTRAUMA/FULLTEXT/2023/02000/ASSESSING_TRAUMA_READINESS_COSTS_IN_LEVEL_III_AND_IV11.ASPX](https://journals.lww.com/jtrauma/fulltext/2023/02000/ASSESSING_TRAUMA_READINESS_COSTS_IN_LEVEL_III_AND_IV11.ASPX)

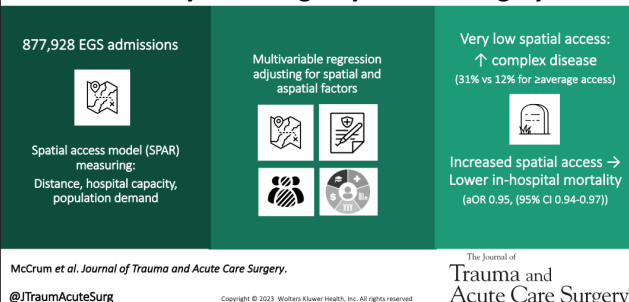
How trauma patients die in low resource settings: identifying early targets for trauma quality improvement



HOW TRAUMA PATIENTS DIE IN LOW RESOURCE SETTINGS: IDENTIFYING EARLY TARGETS FOR TRAUMA QUALITY IMPROVEMENT

[HTTPS://JOURNALS.LWW.COM/JTRAUMA/FULLTEXT/2023/02000/HOW_TRAUMA PATIENTS_DIE_IN_LOW_RESOURCE_SETTINGS_15.ASPX](https://journals.lww.com/jtrauma/fulltext/2023/02000/HOW_TRAUMA PATIENTS_DIE_IN_LOW_RESOURCE_SETTINGS_15.ASPX)

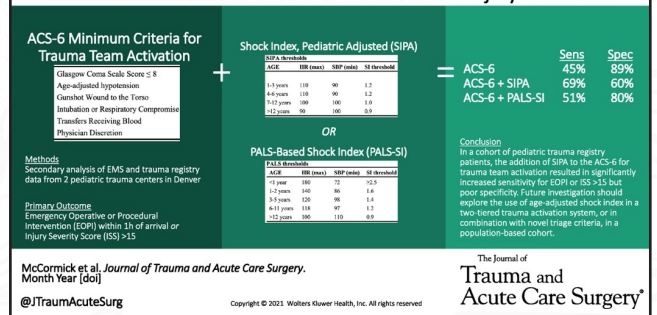
Greater Spatial Access to Care is Associated with Lower Mortality for Emergency General Surgery



GREATER SPATIAL ACCESS TO CARE IS ASSOCIATED WITH LOWER MORTALITY FOR EMERGENCY GENERAL SURGERY

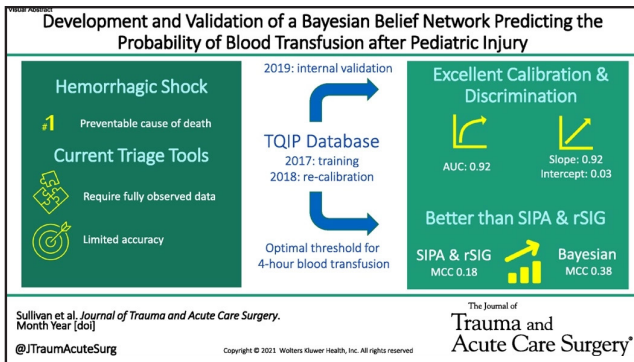
[HTTPS://JOURNALS.LWW.COM/JTRAUMA/FULLTEXT/2023/02000/GREATER_SPATIAL_ACCESS_TO_CARE_IS_ASSOCIATED_WITH12.ASPX](https://journals.lww.com/jtrauma/fulltext/2023/02000/GREATER_SPATIAL_ACCESS_TO_CARE_IS_ASSOCIATED_WITH12.ASPX)

Adding Age-Adjusted Shock Index to the American College of Surgeons' Trauma Team Activation Criteria to Predict Severe Injury in Children



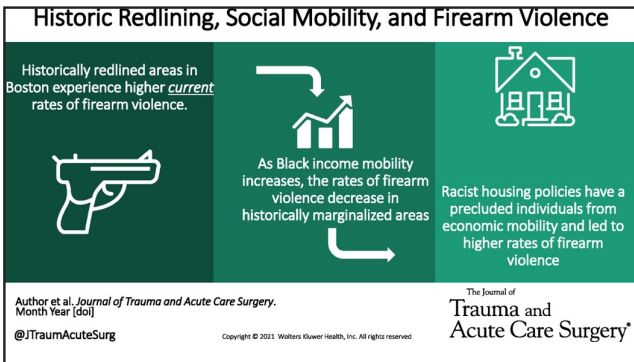
ADDING AGE-ADJUSTED SHOCK INDEX TO THE AMERICAN COLLEGE OF SURGEON TRAUMA TEAM ACTIVATION CRITERIA TO PREDICT SEVERE INJURY IN CHILDREN

[HTTPS://JOURNALS.LWW.COM/JTRAUMA/FULLTEXT/2023/02000/ADDING_AGE_ADJUSTED_SHOCK_INDEX_TO_THE_AMERICAN16.ASPX](https://journals.lww.com/jtrauma/fulltext/2023/02000/ADDING_AGE_ADJUSTED_SHOCK_INDEX_TO_THE_AMERICAN16.ASPX)



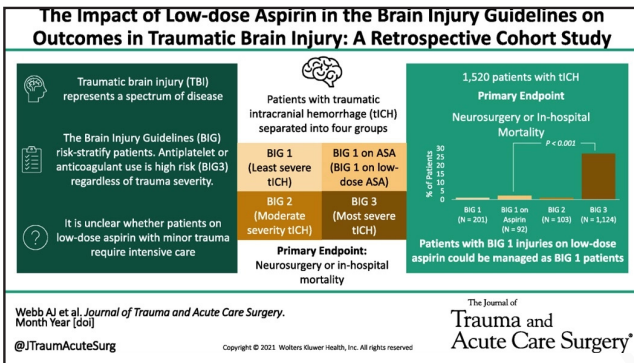
DEVELOPMENT AND VALIDATION OF A BAYESIAN BELIEF NETWORK PREDICTING THE PROBABILITY OF BLOOD TRANSFUSION AFTER PEDIATRIC INJURY

[HTTPS://JOURNALS.LWW.COM/JTRAUMA/FULLTEXT/2023/02000/DEVELOPMENT_AND_VALIDATION_OF_A_BAYESIAN_BELIEF.17.ASPX](https://journals.lww.com/jtrauma/fulltext/2023/02000/development_and_validation_of_a_bayesian_belief.17.aspx)



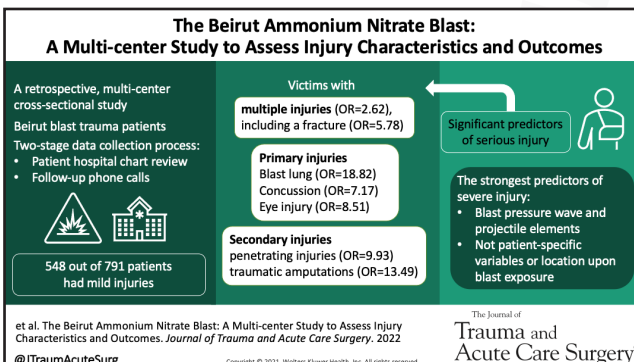
HISTORIC REDLINING, SOCIAL MOBILITY, AND FIREARM VIOLENCE

[HTTPS://JOURNALS.LWW.COM/JTRAUMA/FULLTEXT/2023/02000/HISTORIC_REDLINING_SOCIAL_MOBILITY_AND_FIREARM.18.ASPX](https://journals.lww.com/jtrauma/fulltext/2023/02000/historic_redlining_social_mobility_and_firearm.18.aspx)



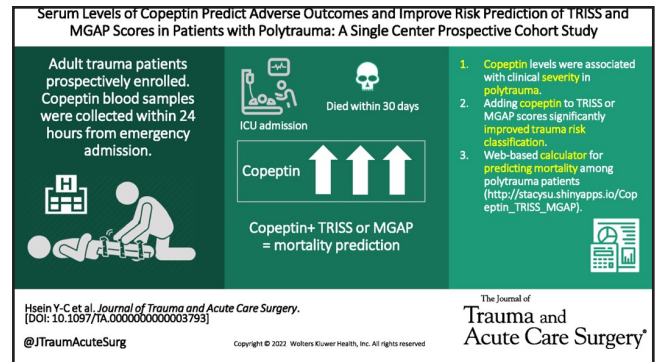
THE IMPACT OF LOW-DOSE ASPIRIN IN THE BRAIN INJURY GUIDELINES ON OUTCOMES IN TRAUMATIC BRAIN INJURY: A RETROSPECTIVE COHORT STUDY

[HTTPS://JOURNALS.LWW.COM/JTRAUMA/FULLTEXT/2023/02000/THE_IMPACT_OF_LOW_DOSE_ASPIRIN_IN_THE_BRAIN_INJURY.19.ASPX](https://journals.lww.com/jtrauma/fulltext/2023/02000/the_impact_of_low_dose_aspirin_in_the_brain_injury.19.aspx)



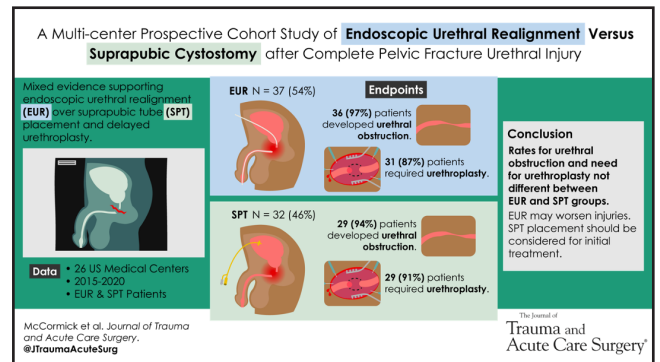
THE BEIRUT AMMONIUM NITRATE BLAST: A MULTI-CENTER STUDY TO ASSESS INJURY CHARACTERISTICS AND OUTCOMES

[HTTPS://JOURNALS.LWW.COM/JTRAUMA/FULLTEXT/2023/02000/THE_BEIRUT_AMMONIUM_NITRATE_BLAST_A_MULTICENTER.20.ASPX](https://journals.lww.com/jtrauma/fulltext/2023/02000/the_beirut_ammonium_nitrate_blast_a_multicenter.20.aspx)



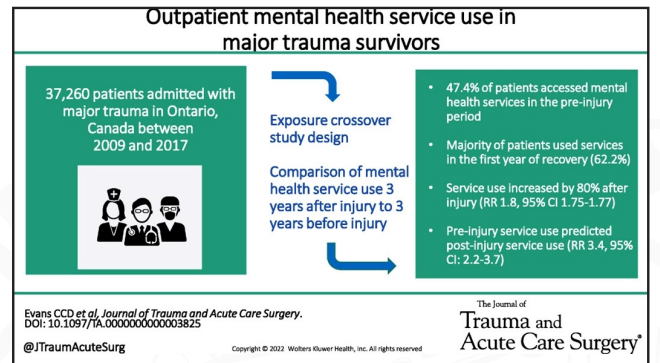
SERUM LEVELS OF COPEPTIN PREDICT ADVERSE OUTCOMES AND IMPROVE RISK PREDICTION OF TRISS AND MGAP SCORES IN PATIENTS WITH POLYTRAUMA: A SINGLE CENTER PROSPECTIVE COHORT STUDY

[HTTPS://JOURNALS.LWW.COM/JTRAUMA/FULLTEXT/2023/02000/SERUM_LEVELS_OF_COPEPTIN_PREDICT_ADVERSE_OUTCOMES.21.ASPX](https://journals.lww.com/jtrauma/fulltext/2023/02000/serum_levels_of_copeptin_predict_adverse_outcomes.21.aspx)



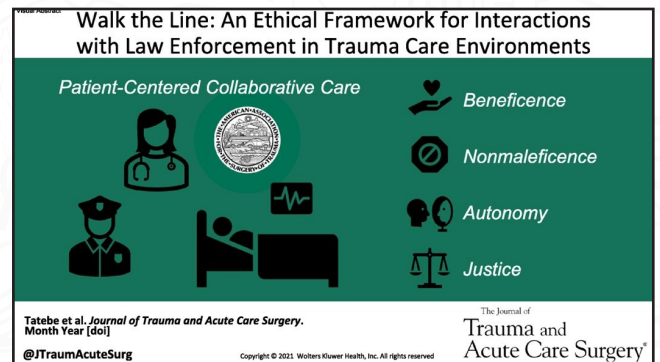
MULTI-CENTER PROSPECTIVE STUDY OF ENDOSCOPIC URETHRAL REALIGNMENT VERSUS SUPRAPUBIC CYSTOSTOMY AFTER COMPLETE PELVIC FRACTURE URETHRAL INJURY

[HTTPS://JOURNALS.LWW.COM/JTRAUMA/FULLTEXT/2023/02000/A_MULTICENTER_PROSPECTIVE_COHORT_STUDY_OF.22.ASPX](https://journals.lww.com/jtrauma/fulltext/2023/02000/a_multicenter_prospective_cohort_study_of.22.aspx)



OUTPATIENT MENTAL HEALTH SERVICE USE IN MAJOR TRAUMA SURVIVORS: A POPULATION-BASED COHORT STUDY FROM ONTARIO, CANADA

[HTTPS://JOURNALS.LWW.COM/JTRAUMA/FULLTEXT/2023/02000/OUTPATIENT_MENTAL_HEALTH_SERVICE_USE_IN_MAJOR.23.ASPX](https://journals.lww.com/jtrauma/fulltext/2023/02000/outpatient_mental_health_service_use_in_major.23.aspx)



WALK THE LINE: AN ETHICAL FRAMEWORK FOR INTERACTIONS WITH LAW ENFORCEMENT IN TRAUMA CARE ENVIRONMENTS

[HTTPS://JOURNALS.LWW.COM/JTRAUMA/FULLTEXT/2023/02000/WALK_THE_LINE_AN_ETHICAL_FRAMEWORK_FOR.25.ASPX](https://journals.lww.com/jtrauma/fulltext/2023/02000/walk_the_line_an_ethical_framework_for.25.aspx)

NO VISUAL ABSTRACT PROVIDED

THE GREAT TEAM: A RECIPE

[HTTPS://JOURNALS.LWW.COM/JTRAUMA/FULLTEXT/2023/02000/THE_GREAT_TEAM_A_RECIPE.24.ASPX](https://journals.lww.com/jtrauma/fulltext/2023/02000/the_great_team_a_recipe.24.aspx)

NO VISUAL ABSTRACT PROVIDED

THE MANAGEMENT OF PENETRATING TRAUMA IS NOT JUST A RACE

[HTTPS://JOURNALS.LWW.COM/JTRAUMA/FULLTEXT/2023/02000/THE_MANAGEMENT_OF_PENETRATING_TRAUMA_IS_NOT_JUST_A.26.ASPX](https://journals.lww.com/jtrauma/fulltext/2023/02000/the_management_of_penetrating_trauma_is_not_just_a_race.26.aspx)

NO VISUAL ABSTRACT PROVIDED

WHEN IT COMES TO URBAN PENETRATING TRAUMA IN AMERICA: START YOUR ENGINES

[HTTPS://JOURNALS.LWW.COM/JTRAUMA/FULLTEXT/2023/02000/WHEN_IT_COMES_TO_URBAN_PENETRATING_TRAUMA_IN.27.ASPX](https://journals.lww.com/jtrauma/fulltext/2023/02000/when_it_comes_to_urban_penetrating_trauma_in.27.aspx)

